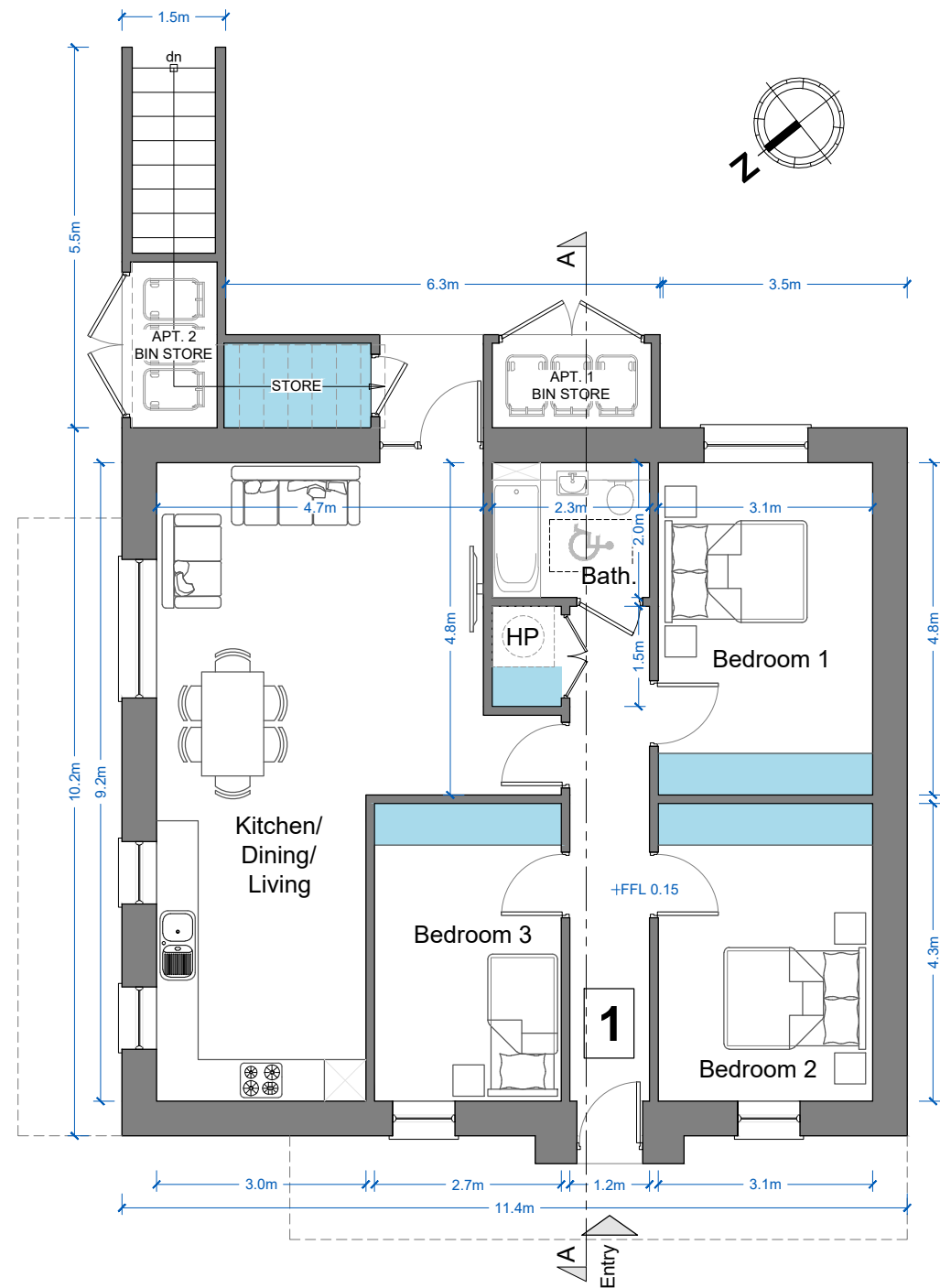


All dimensions to be checked on site. Figured dimensions take preference over scaled dimensions. Any errors or discrepancies to be reported to the Architects. This drawing may not be edited or modified by the recipient.

"Copyright and ownership of this drawing is vested in STRUTEC, whose prior written consent is required for its use, reproduction or for publication to any third party. All rights reserved by the law of copyright and by international copyright conventions are reserved to STRUTEC and may be protected by court proceedings for damages and/or injunctions and costs."

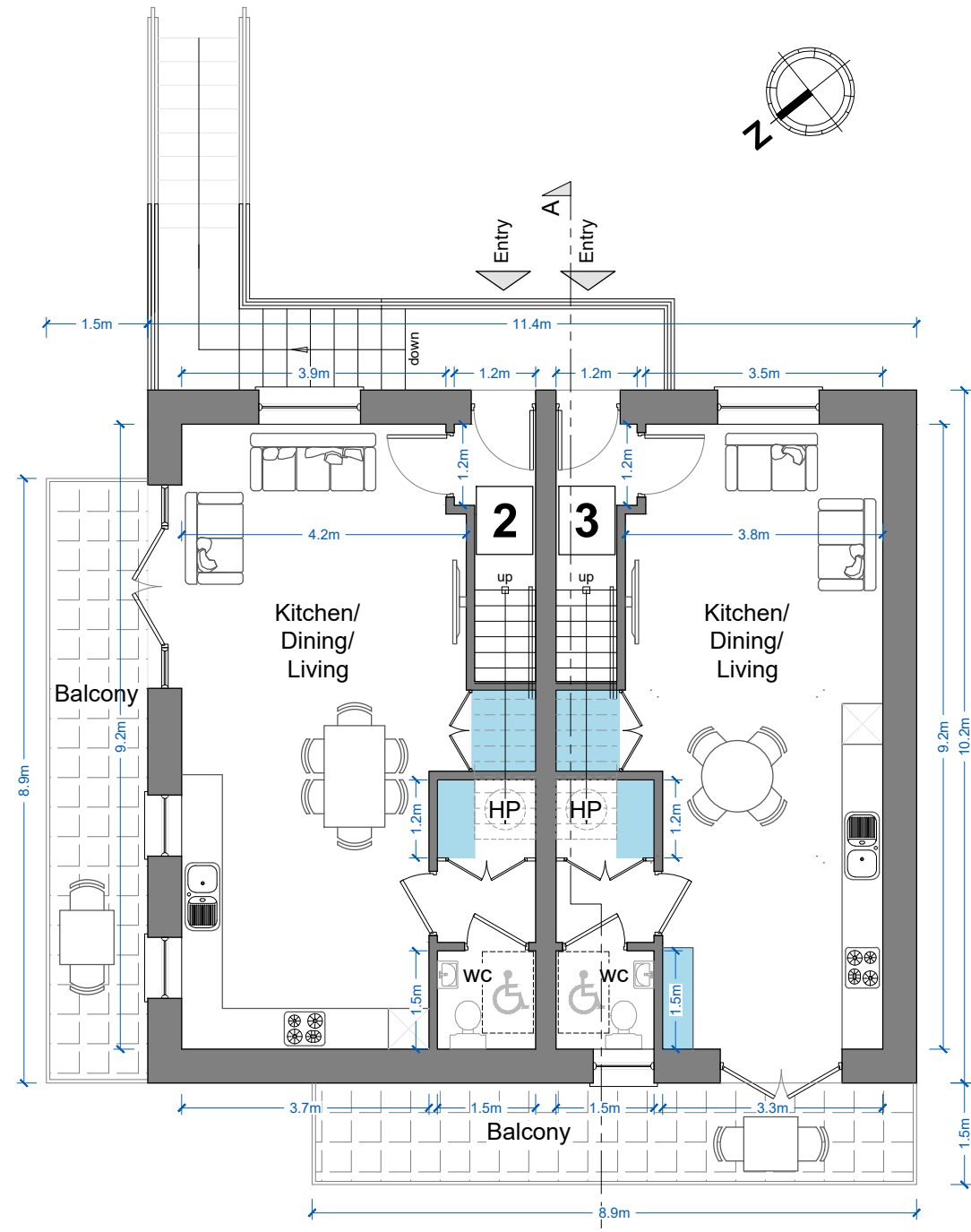
### NOTE

LEVELS, ORIENTATION AND SITUATION (E.G. DETACHED, SEMI-DETACHED OR TERRACED) VARY PER UNIT. REFER TO SITE PLAN FOR LEVELS, ORIENTATION AND SITE CONTEXT INFORMATION.



GROUND FLOOR PLAN  
SCALE 1:100

**APARTMENT 1: 3-BED**  
 FLOOR AREA 95.5m<sup>2</sup>  
 INDOOR STORAGE AREA 6m<sup>2</sup>  
 OUTDOOR STORAGE AREA (VARIES PER SITE)  
 PRIVATE AMENITY SPACE (VARIES PER SITE)



FIRST FLOOR PLAN  
SCALE 1:100

**APARTMENT 2: 3-BED DUPLEX**  
 FLOOR AREA ENTRY STOREY 48.2m<sup>2</sup>  
 FLOOR AREA TOTAL 99.8m<sup>2</sup>  
 INDOOR STORAGE AREA 6.4m<sup>2</sup>  
 OUTDOOR STORAGE AREA (VARIES PER SITE)  
 PRIVATE AMENITY SPACE 13.4m<sup>2</sup>

**APARTMENT 3: 2-BED DUPLEX**  
 FLOOR AREA ENTRY STOREY 44.5m<sup>2</sup>  
 FLOOR AREA TOTAL 85.2m<sup>2</sup>  
 INDOOR STORAGE AREA 5.9m<sup>2</sup>  
 OUTDOOR STORAGE AREA (VARIES PER SITE)  
 PRIVATE AMENITY SPACE 13.4m<sup>2</sup>

REV	DATE	REV BY	DESCRIPTION
-	-	-	-
STATUS			<b>PLANNING</b>
PROJECT			CREAGH STRATEGIC HOUSING RESIDENTIAL DEVELOPMENT
PROJECT ADDRESS			BALLOWEN/RAMSFORTPARK, GOREY, CO. WEXFORD
DWG TITLE			APARTMENT BLOCK TYPE C FLOOR PLANS
DWG NO		PL2-220	REV -
JOB NO	1725	SCALE @ A3 1:100	
DATE	30.11.2018	DRN Liam Minogue	
 STRUTEC, Architects - Engineers - Project Managers Architectural & Engineering Consultants, Garryhill, Bagenalstown, Co. Carlow, R2 KP44 Ireland Tel +353 (0)59 97 27623 W www.strutec.ie E info@strutec.ie			